

Information for Taught Museum Session:

Materials

Hands-on Workshop

Use your senses to explore objects, take themed backpacks around the Museum and discover the variety of materials people use to make everyday objects.

Key stage 1

National Curriculum Subject Areas:

Science Everyday Materials

Length of session: 60 minutes

Maximum group size: 32

Session Outline

- Welcome to the Museum (5 minutes)
- Looking at raw materials
Handling objects from around the world and identifying materials they are made from (25 minutes)
- Self-guided activity around the Museum where small groups look for objects made from 8 different materials in the backpack
Adult required for each group. (25 minutes)
- Plenary (5 minutes)
- Please allow for extra time if you want to visit the shop, or explore the Museum further

Learning Outcomes

Aims

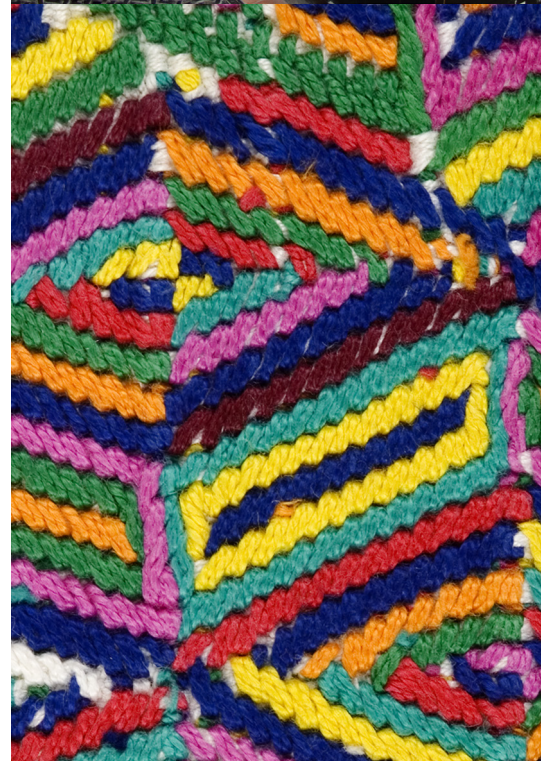
- Appreciate the wide range of materials used to make everyday objects around the world
- Use of senses to identify raw materials
- Explore the collections of the Museum

Key concepts

- Identifying raw materials used to make objects
- Diversity of materials used around the world to make same type of object, such as a shoe

“The children were buzzing - really fascinating - thanks.” (Yr 1 teacher)

“ I didn’t know you could make a shoe out of straw!” (Yr 1 pupil)



Pre-visit activities

- Explore materials which can be found naturally.
- List the materials you can find in your classroom.

Post-visit activities

- Make a collage using as many different materials that you can find such as leaves, feathers, wool, plastic bags, paper or twigs.
- Research the different materials used to make a particular object around the world, such as shoes, shelter or musical instruments.
- Design a suit of armour made from a range of natural materials - in the Pitt Rivers Museum there is armour made from coconut fibre, crocodile and sting ray skin!

Booking information:

Booking is essential for all groups

We require a ratio of 1 adult to 10 pupils

Monday 12.00 – 4.30

Tuesday to Sundays 10.00 – 4.30

01865 613031

education@prm.ox.ac.uk

www.prm.ox.ac.uk

Pitt Rivers Museum, South Parks Road, Oxford OX1 3PP

Access is gained through the Oxford University Museum of Natural History.

Visits to this Museum must be booked separately using these contact details:

01865 282451 education@oum.ox.ac.uk

Facilities

- Lunch can be eaten on the Museum lawn or in the University Parks in fine weather. If you require a space for lunch please discuss this when making your booking.
- The museum is fully accessible to visitors with disability, with an adapted toilet and lift to all floors. A disabled parking space may be booked in advance.

The cost for this session is £100 . By supporting the Museum with this charge you are helping us meet some of the costs that go towards running our educational activities and ensuring that we can continue to develop new and exciting sessions for schools.

