

Making the most of
your visit to the

Pitt Rivers

M U S E U M

Access information for
visitors with disabilities



Address and contact details

Pitt Rivers Museum

Parks Road

Oxford

OX1 3PP

t: 01865 270927

f: 01865 270943

e: prm@prm.ox.ac.uk

w: www.prm.ox.ac.uk

Opening hours

10am – 4.30pm Tuesday to Sunday and Bank Holiday
Monday; 12 – 4.30pm Monday.

Please check closing times for Christmas and Easter.

Admission Free.

Let us help you

We advise all visitors with specific requirements to ring in advance on 01865 270927. This will allow us to discuss any difficulties you might encounter, and to offer you the best service possible.

Contents

- 2 Contact information and opening hours
- 4 Introduction to the Pitt Rivers Museum
- 5 The new extension and location
- 6 Transport information
- 7 Entering the Museum
- 8 Inside the Museum
- 9 The displays
- 10 Oxford city centre map
- 12 Planning your visit and Group visits
- 13 The Museum shop
- 14 Audio guide
- 15 Information for wheelchair users
- 16 Information for visitors with restricted mobility
Information for visitors with hearing impairment
- 17 Information for visitors with visual impairment
- 18 Information for visitors with learning difficulties
- 19 Feedback, virtual access to the Museum
and free activities
- 20 Support the Museum

Introduction to the Pitt Rivers Museum

We hope everyone enjoys their visit to the Pitt Rivers Museum. It has much to offer in terms of atmosphere and history as well as internationally famous anthropological collections. The displays are housed in a single three-storey Victorian building situated behind the Oxford University Museum of Natural History (OUMNH) on Parks Road.

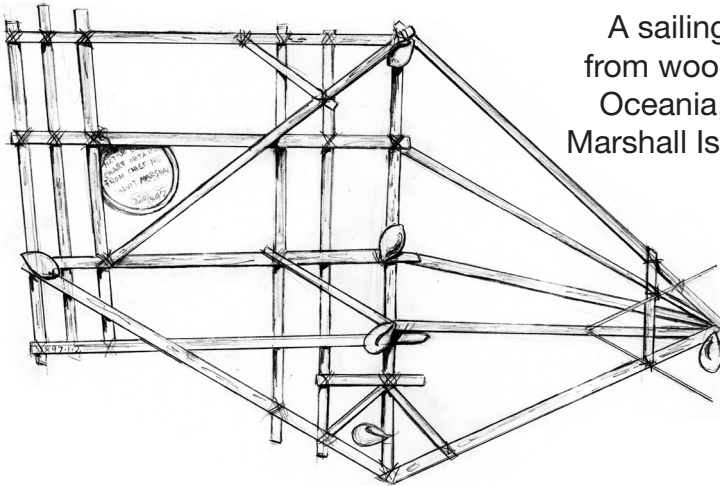
Founded in 1884, the Museum has kept much of its period charm. Objects are displayed by ‘type’, or function, rather than in geographical or historical groupings. This shows how different cultures have solved similar problems encountered in everyday life. The original display cases are crowded with everyday objects from around the world and from all periods. The original labels, handwritten in sepia ink, are now of historic interest in themselves.

However, the very qualities that make the Museum so special and well-loved may present problems for our visitors. It can be difficult to move freely around the cases. The dim lighting, essential for the conservation of these objects, can make it almost impossible to read some of the smallest labels.

To gain a pre-visit impression of what the Museum looks like you can try the 360° virtual tour on our website, which allows you to zoom in on displays from many points throughout the galleries.

The new extension

A contemporary extension now connects to the galleries and provides new research facilities as well as bringing all the Museum staff together under one roof. Areas for public use include a lecture theatre (with induction loop), seminar room, exhibition area and toilets, including an adapted toilet and a baby change room. There is also a large lift to all floors.



A sailing chart made from wood and shells.
Oceania, Micronesia,
Marshall Islands, Jaluit.
1897.1.2

Location

A map of central Oxford showing the Museum's location can be found on page 12.

Further maps can be found on our website (www.prm.ox.ac.uk) under the section entitled 'Visiting'.

Transport information

By car: There is very limited pay & display parking in St Giles, Keble Road and Broad Street. Visitors with limited mobility should telephone in advance and our receptionist will try to organise a parking space by the Museum entrance. No other parking is available.

By bus: There is no bus route past the Museum (other than the city tour buses). Visitors should alight in the city centre and follow sign posts. The city encourages visitors to use the Park and Ride system. Five car parks around the city are served by the Oxford Bus Company. Further information from www.oxfordbus.co.uk, 01865 785400 or info@oxfordbus.co.uk

By train: It takes 25 minutes to walk from the railway station.

On foot: The Museum is 10–15 minutes walk from the centre of Oxford and Gloucester Green bus station. Walk along George Street, cross over to Broad Street and at the end turn left onto Parks Road.

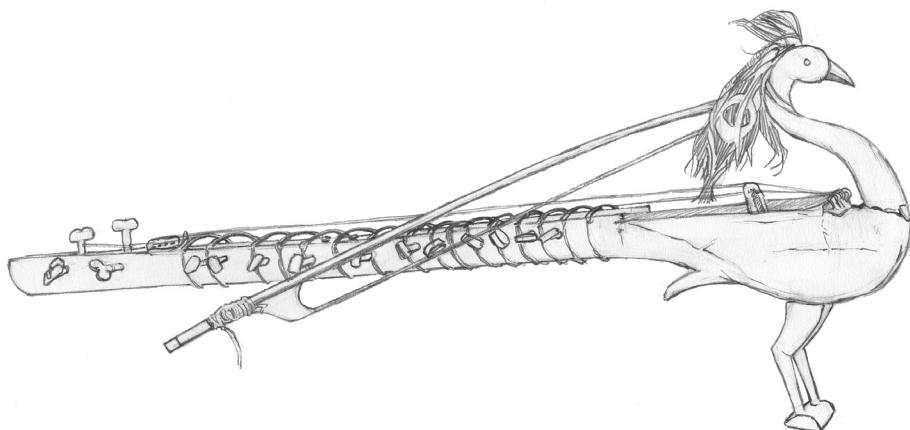
By taxi: There are taxi ranks at the railway station and at Gloucester Green (by the Odeon cinema).

By coach/minibus: Coaches and minibuses can drop off or pick up on Parks Road outside the Oxford University Museum of Natural History. The nearest coach park is in Oxpens Road, by Oxford ice rink.

Entering the Museum

The main entrance to the Pitt Rivers Museum is through the Oxford University Museum of Natural History on Parks Road, up a flight of nine stone steps with a hand rail. Along to the right of this main doorway is an alternative entrance. Please ring the door bell for attendance. There are toilet facilities and an adapted toilet for wheelchair users at the far side.

Once inside the Oxford University Museum of Natural History, the main door to the Pitt Rivers Museum is at the far side of the central court. To the right through the entrance, is the Information Point with a platform lift down to the ground floor. Alternatively straight ahead is a flight of 9 steps into the Museum.



Fiddle in the form of a Peacock, India. 1884.113.41.1

Inside the Museum

Assistance: Once inside the Pitt Rivers Museum, please feel free to ask for assistance whenever you need it. Our staff are very happy to help in any way. We welcome feedback or comments which will help us to improve our services.

Other facilities: We regret that at present there is no restaurant or cloakroom in either Museum. Please ask a member of staff if you require assistance with any large baggage.

Toilets: These are located on the ground floor in the new extension as signed. There are also facilities available at the front of the Oxford University Museum of Natural History.

Photography: Flash photography and filming (no tripods) for personal use, are allowed in the Museum.

Selection of old handwritten Museum labels



The displays

- A free Gallery Plan gives an overview of the location of different displays and essential facts about the Museum. There is no start or fixed route around the displays, you are free to follow your own interests.
- The display cases in the Court (ground floor) are close together. There is a Highlights trail suitable for wheelchair users indicating a pathway through the displays and pinpointing many objects of interest.
- The special exhibitions area has changing displays which provide a more contemporary approach to the collections.
- The light levels in the Museum are kept low for conservation reasons. Ethnographic objects are often made from fragile, organic material and need to be monitored to ensure that light, temperature and humidity do not harm them. Torches and magnifying glasses are available on loan from the Information Point.
- Some of the drawers may be opened to view additional interesting displays.
- Make sure you visit the Museum's collecting box. This automata was designed by artist Tim Hunkin as a wry comment on the displays!



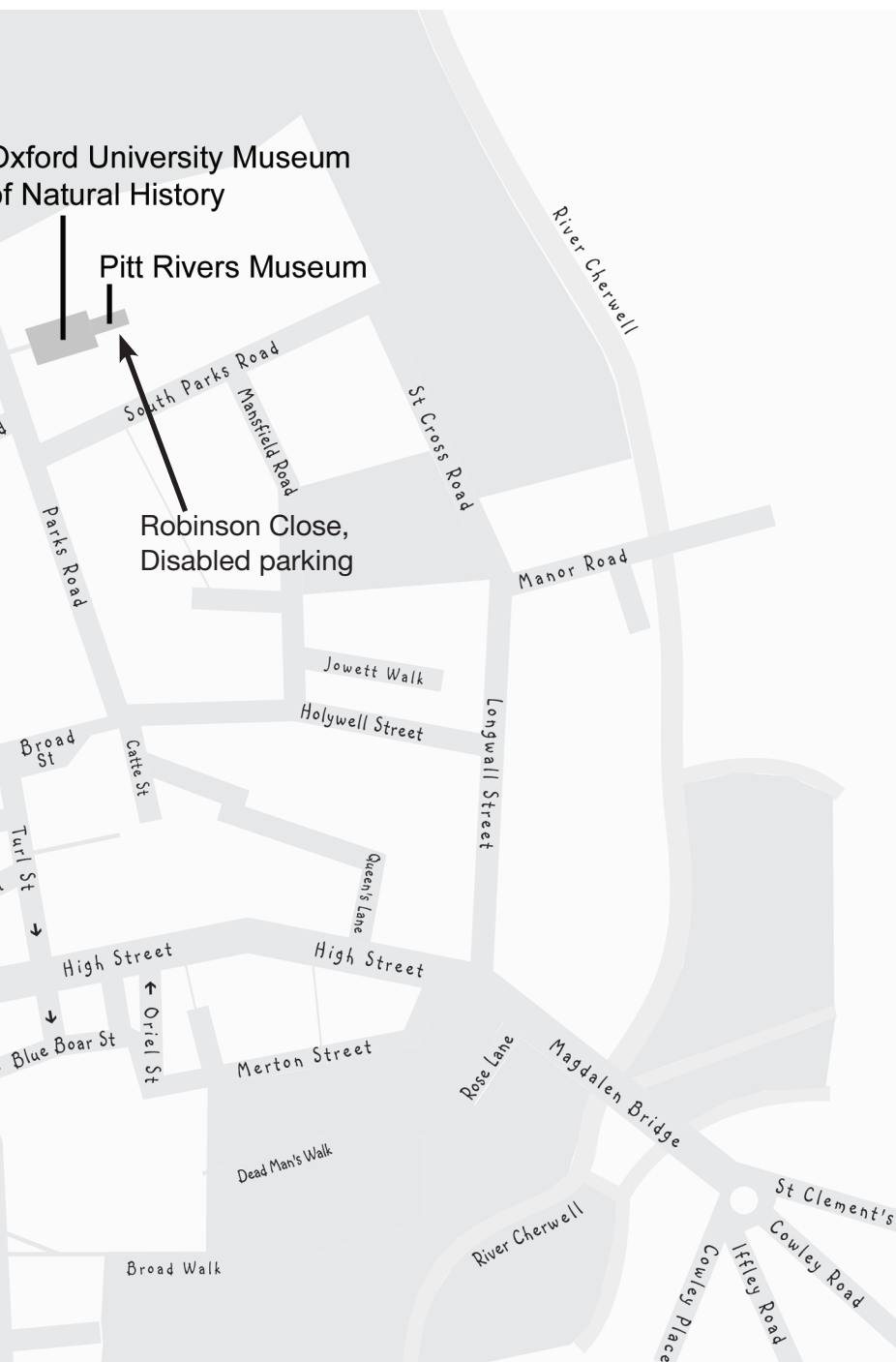
Oxford has a traffic strategy that limits vehicle access to some parts of the city centre. Please contact us for specific directions or visit the maps page at www.oxfordshire.gov.uk



Oxford University Museum
of Natural History

Pitt Rivers Museum

Robinson Close,
Disabled parking



Planning your visit

Weekends and school holidays are usually busy. The quietest times are winter weekdays after 3pm, early Sunday mornings, or during June when British schools have exams.

Group and other special visits

All groups (ten or more) should book their visit in advance providing information about any specific requirements so that the visit can be tailored to your needs.

Our Education Service can offer guided trails and workshops for KS1/2, Art workshops for KS3/4, Introductory talks for secondary school art groups as well as other specialised talks and workshops for all ages. Further information on the specific subjects covered can be found on our website under the Education heading (www.prm.ox.ac.uk)

To find out more or to make a booking contact us:

tel: 01865 270927

email: education@prm.ox.ac.uk.

The Museum Shop

The shop stocks a variety of postcards, books and items relating to the collections.

A map of the displays, a selection of trails and a recommended route suitable for wheelchair users are also available for free by contacting our general number at the front of this booklet.



Wood figure of a Rhinoceros hornbill, kenyalang, the spirit of which is said to be able to attack the souls of enemies. Sarawak, Malaysia. 1970.17.1

Audio guide

The audio guide, is available from the Museum Information Point. It provides a choice of over 100 entries covering a wide range of subjects. The random access technology means you are free to wander and select entries as desired. The audio is offered free to visitors with disabilities and their companions.

On Sunday mornings at 10.45 there is a free audiovisual presentation featuring Sir David Attenborough discussing the collections.

Pottery water jug
from Sudan, Africa.
1950.12.118



Information for wheelchair users



Please refer to the sections on page 9 about arrival and entry to the Museum.

- Our free Highlights trail is suitable for wheelchair users. Please ask for this at the Information Point or contact us in advance for a copy (telephone 01865 270927 or prm@prm.ox.ac.uk).
- Display cases on this route are a minimum of 117cm (46") apart around the perimeter and 81.5cm (32") apart through the central displays. We would advise viewing the panoramic views on the website (under visiting section) to appreciate the dense case layout.
- A wheelchair (self propelling) and electric scooter are available for public use on a first-come, first-served basis and can be booked in advance.
- Visitors with large electric scooters are asked to transfer to the smaller Museum scooter, to avoid any risk of accidental damage.
- The Front of House staff are able to help wheelchair users if requested.



Information for visitors with restricted mobility

- Moveable wooden chairs are provided for leisurely study of the displays. Please ask the gallery staff for help.
- Decorative heating grilles in the ground floor may occasionally cause difficulties for visitors using walking sticks.



Information for visitors with a hearing impairment

- Hearing dogs are welcome in the Museum.
A drinking bowl is available on request.
- There is an induction loop facility in the Shop and Information point and in the lecture theatre.



Information for visitors with a visual impairment

- Guide dogs are welcome. A drinking bowl is available on request.
- Magnifying glasses and torches are available for loan, free of charge, from the Information Point.
- There are decorative heating grilles on the ground floor which may occasionally cause difficulties for those visitors using a cane.
- Large print editions of the Introductory Display text labelling are available and also of this booklet. There are also many factsheets relating to the collections which can be downloaded from our website.



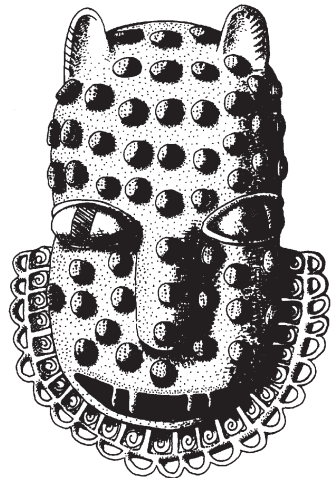
A painted wooden mask used in Noh theatre productions, Japan, AD1600-1800.
1884.114.56



Information for visitors with learning difficulties

- There is very little written material in the museum. The displays are about looking rather than reading. The atmosphere is informal and relaxed.
- Please ask the gallery staff for assistance and information.
- Weekends and school holidays are usually busy. You may prefer to visit during the quieter times, particularly winter weekday afternoons or early Sunday mornings.
- All groups (ten or more) or visitors with any special requirements should book in advance by contacting the museum.
- There is a selection of free trails and activity sheets available at the Information Point.

Leopard mask from
Benin, West Africa



Let us know

We are very keen to receive feedback on your visit. Please let us know what you have enjoyed or if you think anything could be improved. You can write, telephone, email or send us a recording of your views. Our contact details are inside the front cover of this booklet. Comment forms are available at the Information Point.

Virtual access to the museum

The museum's website (www.prm.ox.ac.uk) includes the history of the museum and the collections, downloadable introductory guides, educational resources, what's on, access to online databases and much more.

We now have an enewsletter, which you can sign up to receive by following the link on our homepage or at the Information Point in the Museum.

Free Activities

There are many activities at the Museum including: Family events on the first Saturday of every month, every Sunday afternoon and during school holidays.

Saturday Spotlight on the 3rd Saturday of the month is a gallery talk on a range of subjects suitable for adults and older children.

Support the Museum

Here at the Pitt Rivers Museum we want to ensure that our collections remain accessible for future generations to enjoy, and that our education and outreach work continues. In all this, the Museum relies on the generous support of its visitors, other individuals, trusts, foundations and corporations.

By donating to the Pitt Rivers you will be helping to support the work of the Museum, both in its role as caretaker of one of the world's finest collections of ethnography and world archaeology and as an inspirational provider of education and family friendly events. Your contributions will make all the difference.

You can contribute in many ways:

- Enjoy activating the automata collecting box created by Tim Hunkin.
- Ask for a Gift Aid envelope at the Information Point.
- Visit 'Support the Museum' on the Museum website: www.prm.ox.ac.uk/gift
- Ask for a Friends of the Pitt Rivers membership form at the Information Point.

Alternatively, if you prefer speak to a member of staff during your visit or contact the Museum by one of the methods listed at the front of this leaflet.



Woodcut print entitled *Hungry Bear* by Coast Salish artist Jody Wilson, depicting a grizzly bear in the act of catching a salmon. 1994.59.2